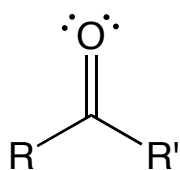
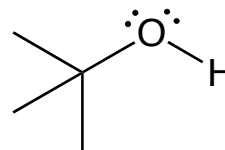


ALDEHYDE



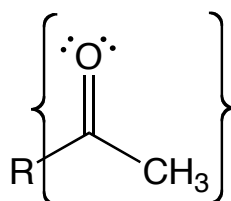
KETONE



ALCOHOL

SOME OTHER STRUCTURAL FEATURES

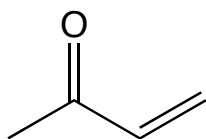
(1) A "METHYL" KETONE OR ALDEHYDE



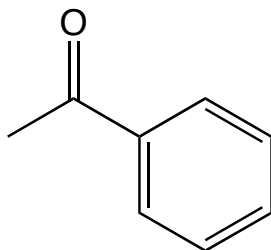
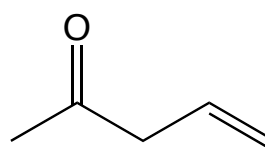
(2) A CONJUGATED CARBONYL

(NEED ALTERNATING DOUBLE AND SINGLE BONDS)

(DOUBLE-SINGLE-DOUBLE
NOT
 DOUBLE-SINGLE-SINGLE-DOUBLE)



NOT



NOT

