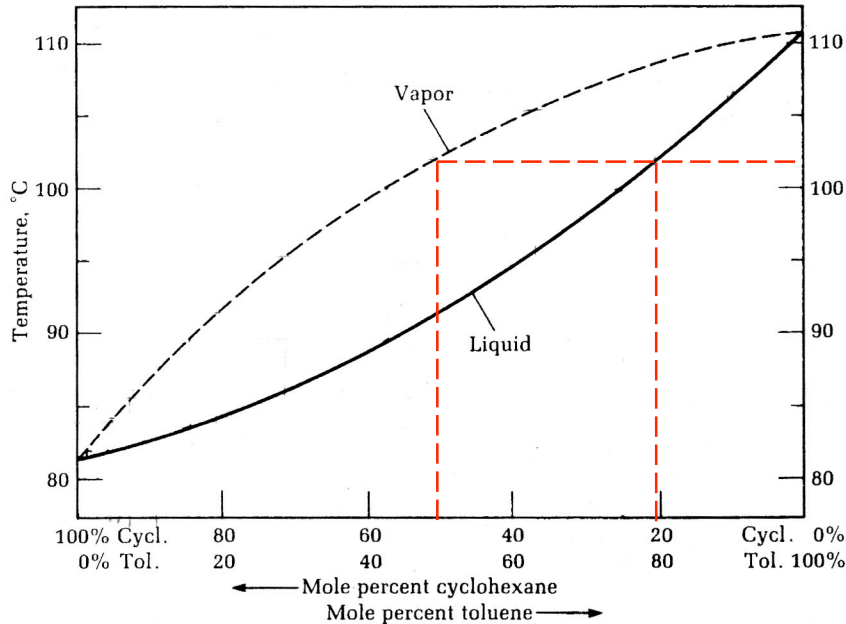


BOILING POINT – COMPOSITION CURVE



WHAT RESULTS IN DOING ONE VAPORIZATION-CONDENSATION STEP STARTING WITH A MIXTURE OF 20% CYCLOHEXANE AND 80% TOLUENE?

- START ON THE X-AXIS AT THE 20% CYC / 80% TOL POINT.
- DRAW A LINE STRAIGHT UP TO THE LIQUID (LOWER) CURVE. THIS TEMPERATURE IS THE B.P. OF THAT MIXTURE.
- DRAW A LINE HORIZONTALLY OVER TO THE VAPOR (UPPER) CURVE, AND THEN DOWN TO THE X-AXIS.

THIS GIVES THE COMPOSITION OF THE VAPOR ABOVE THE 20% CYC / 80% TOL LIQUID MIXTURE.

20% CYC / 80% TOL LIQ MIXTURE

VAPORIZE → **CONDENSE** → **50% CYC / 80% TOL**