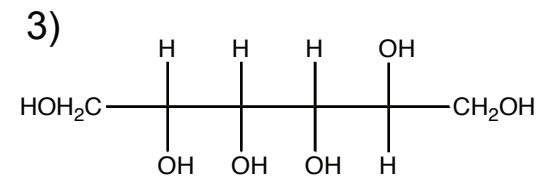
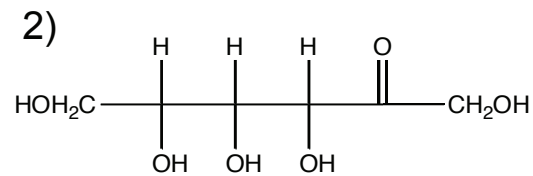
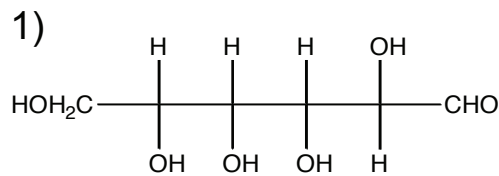
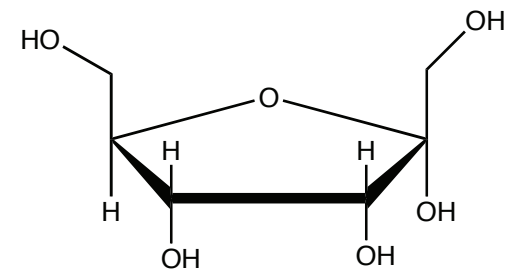
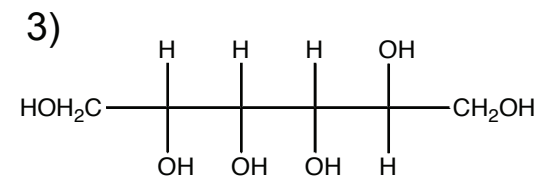
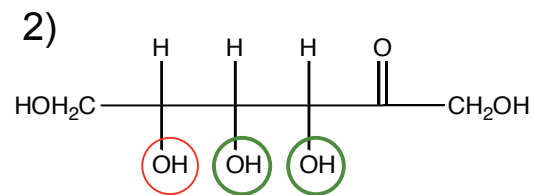
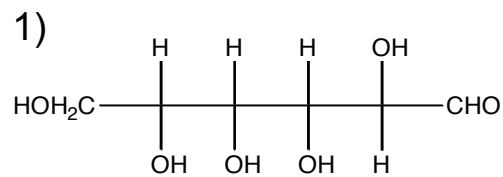
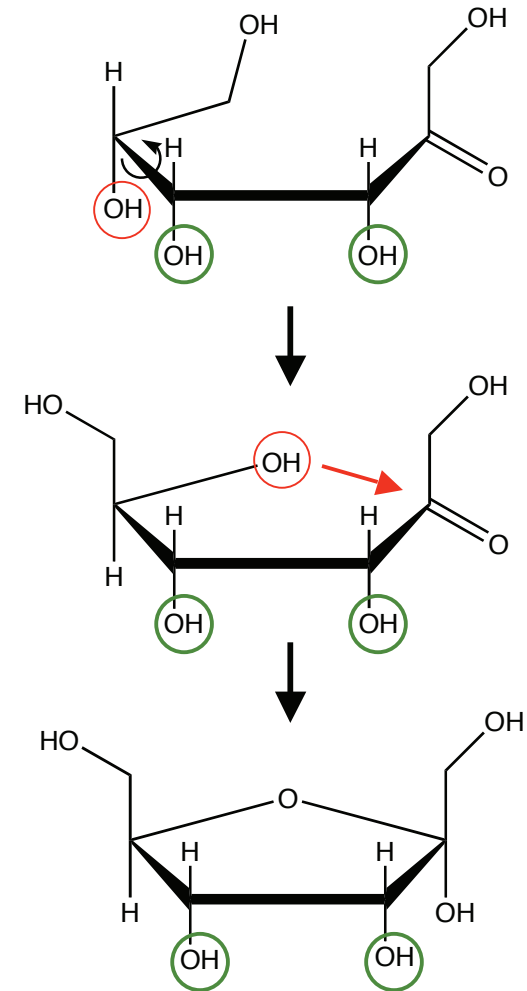
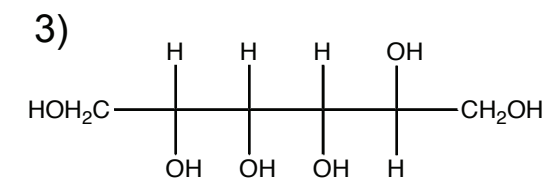
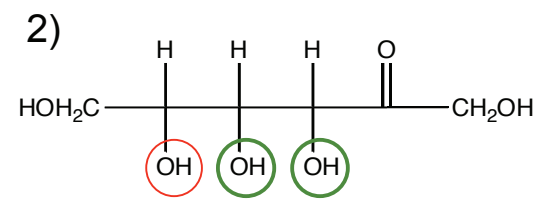
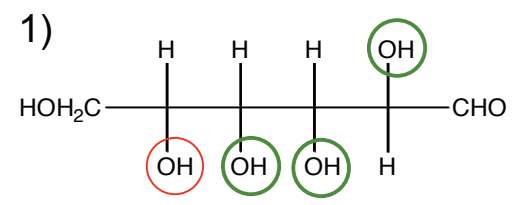
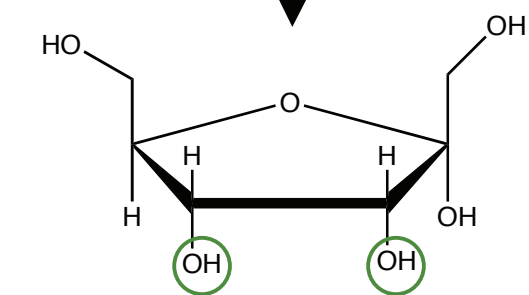
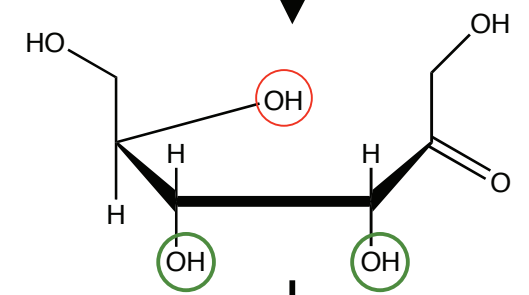
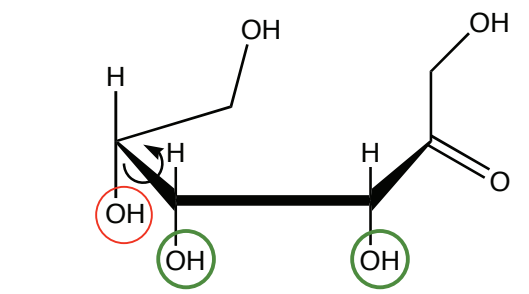
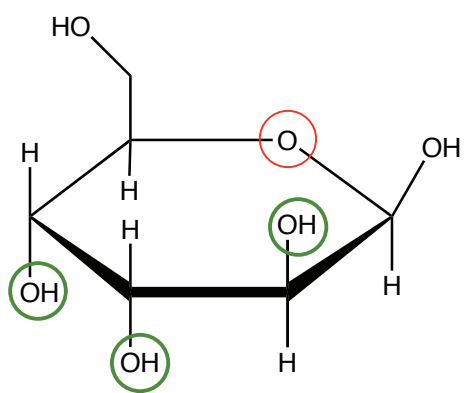
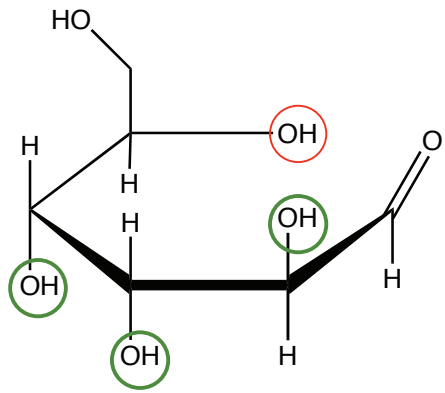


Which of the following can form the cyclic sugar at right?

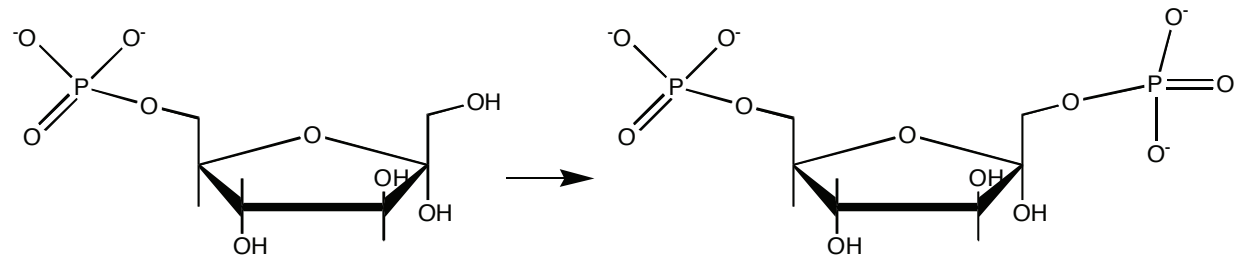


Which of the following can form the cyclic sugar at right?





Which of the following enzymes catalyzes this reaction?



1) pyruvate kinase

2) phosphoglycerate mutase

3) phosphohexose isomerase

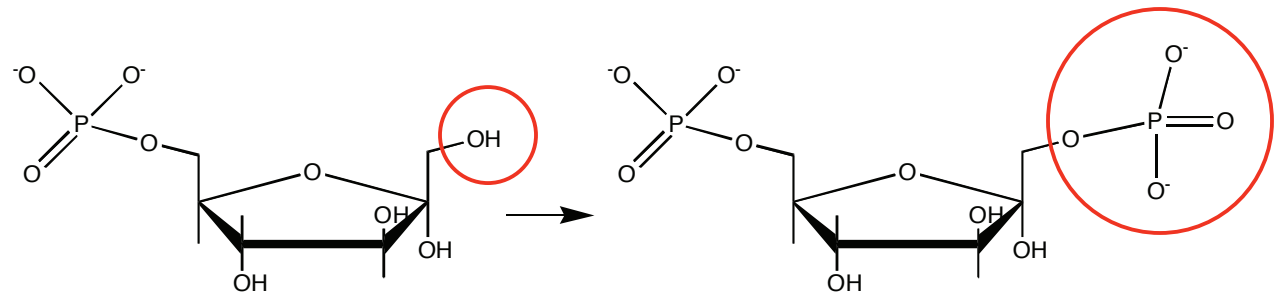
4) phosphofructokinase

5) aldolase



Which of the following enzymes catalyzes this reaction?

3 carbon
end of glycolysis



1) pyruvate kinase

3) phosphohexose isomerase

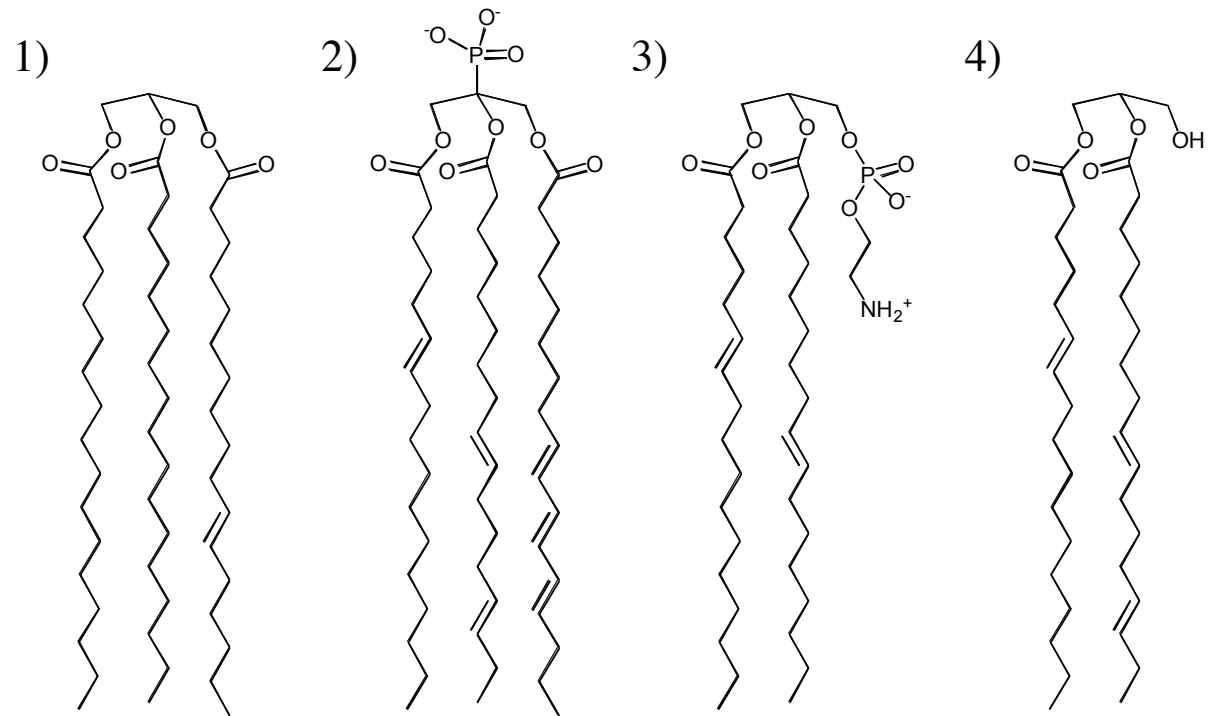
5) aldolase

2) phosphoglycerate mutase

4) phosphofructokinase

fructose

Which occurs in a membrane bilayer?



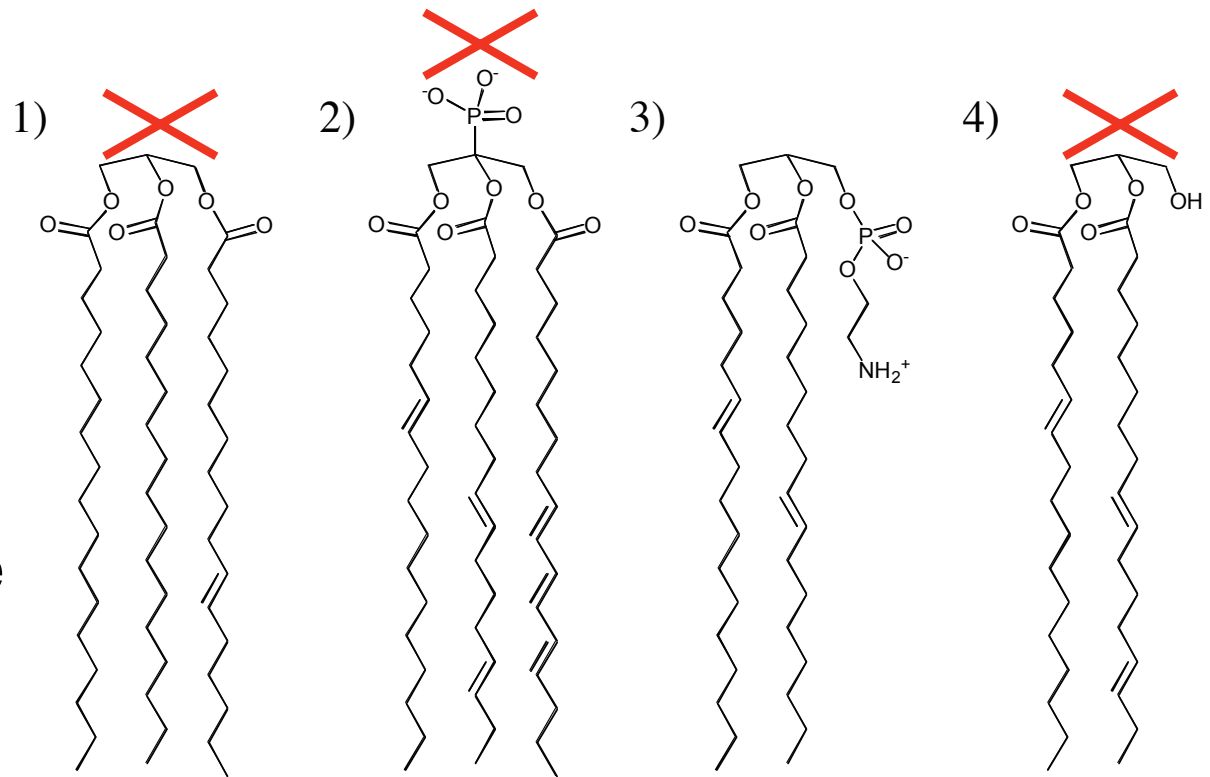
Most of you answered 2 or 3

So 5 points extra for everyone...

Which occurs in a membrane bilayer?

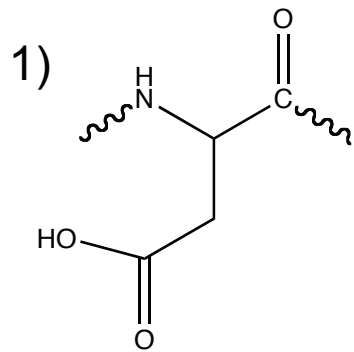
Phospholipid
membrane

One end is charged
This drives membrane
formation

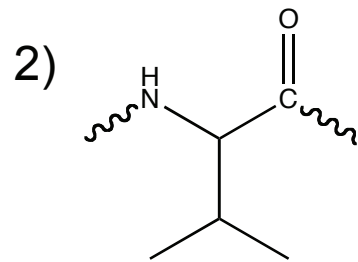


Amino Acids

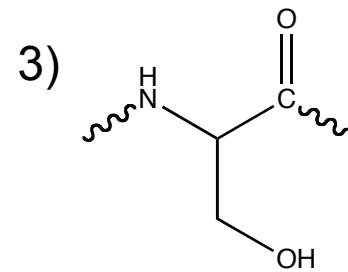
- Which amino acid is most likely to be found in the interior of a protein?



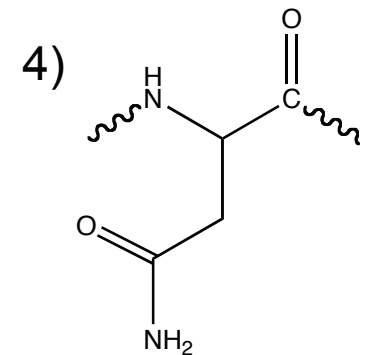
Asp



Val



Ser

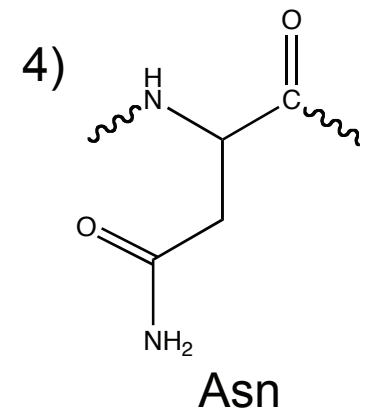
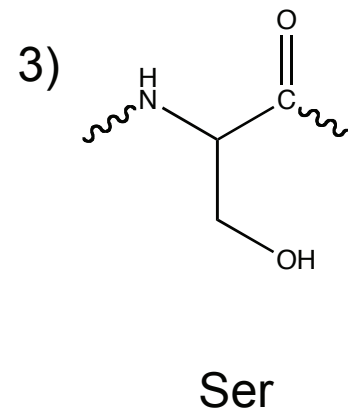
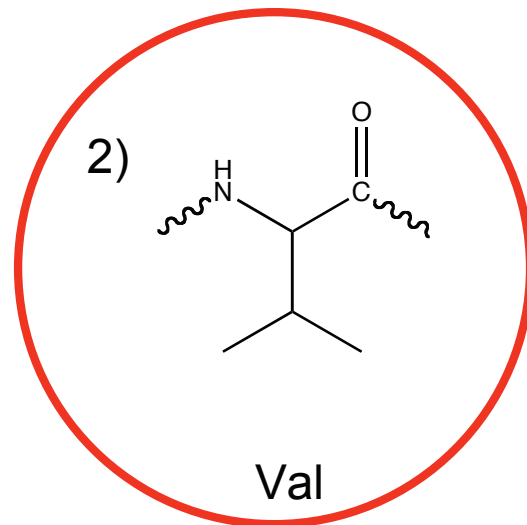
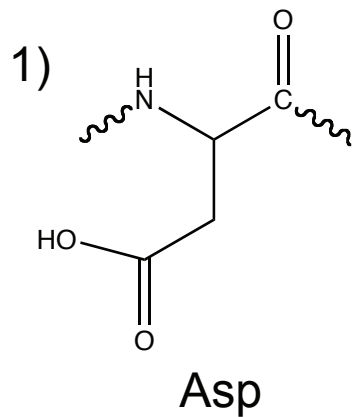


Asn



Amino Acids

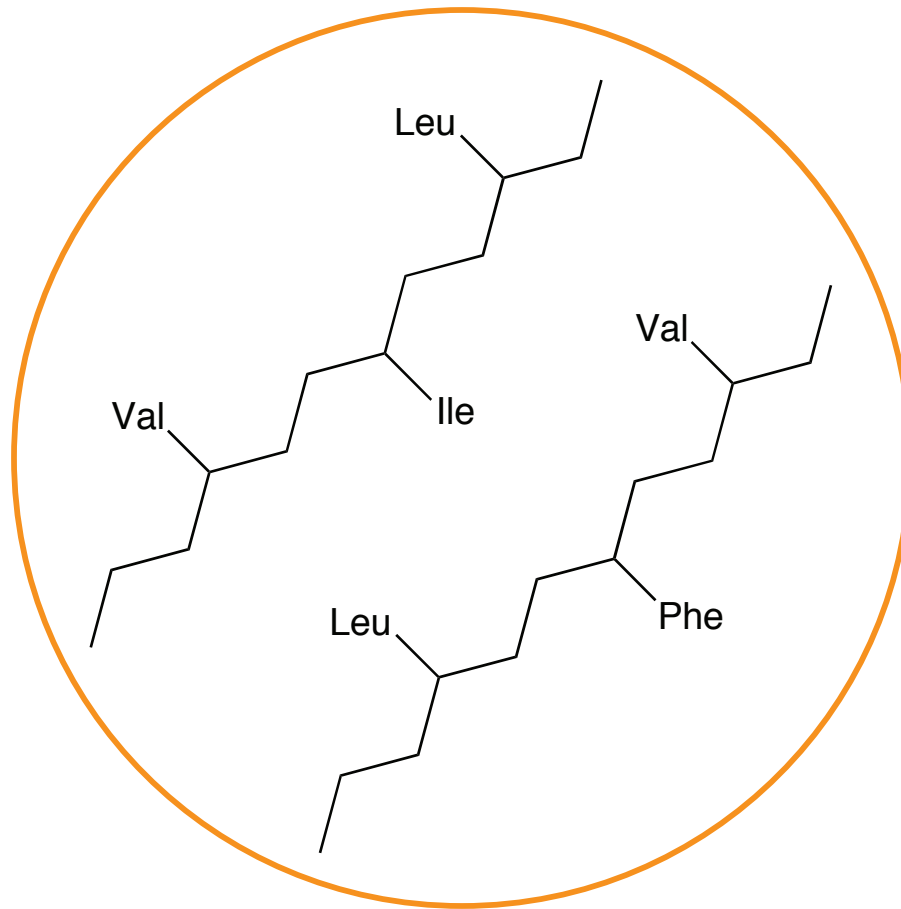
- Which amino acid is most likely to be found in the interior of a protein?



Hydrophobic inside / Hydrophilic outside

water fearing

water loving

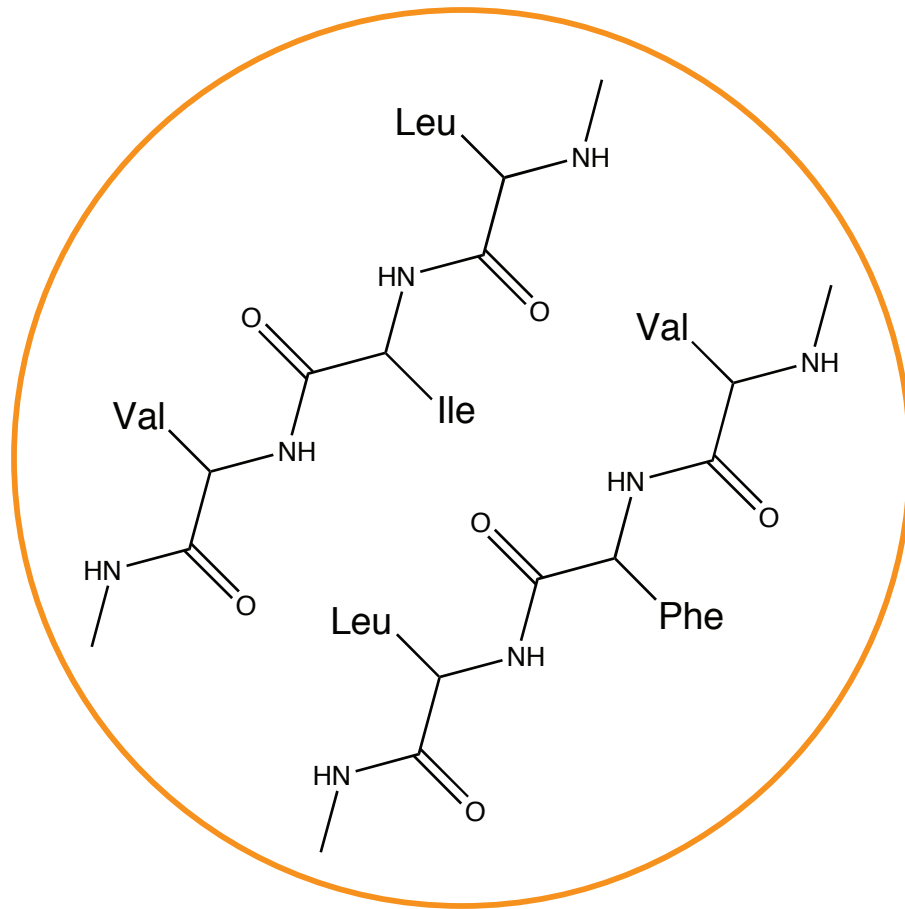


Problem:
This isn't the
polymer backbone

Hydrophobic inside / Hydrophilic outside

water fearing

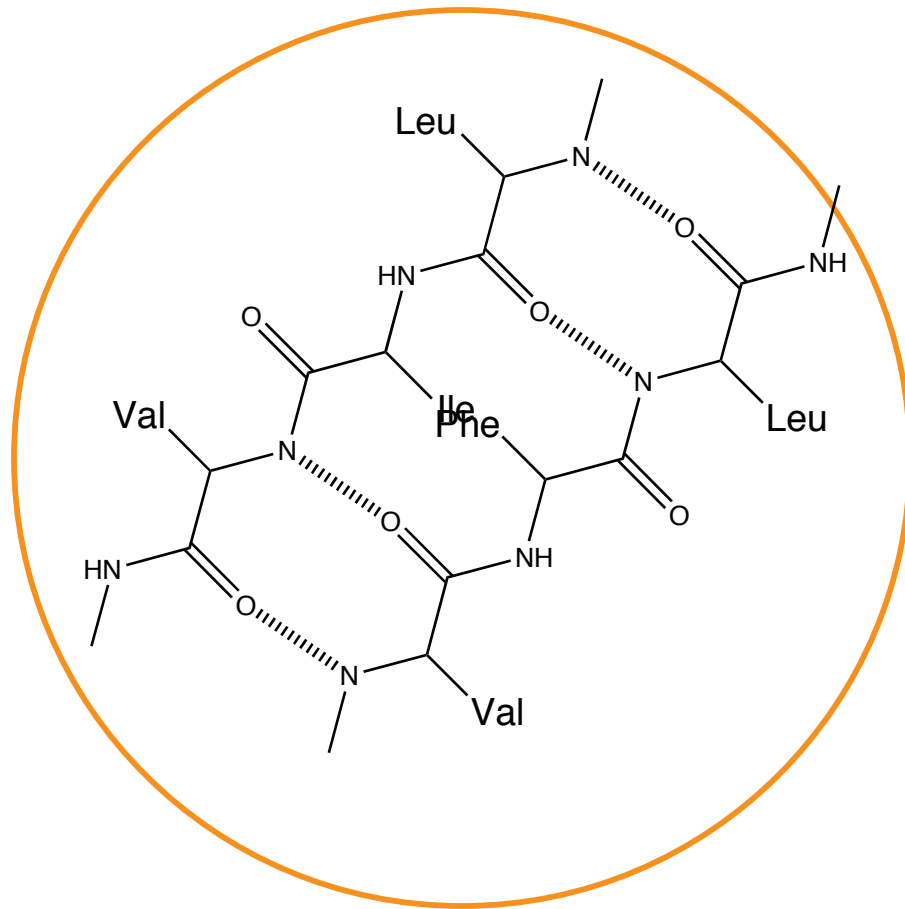
water loving



Hydrophobic inside / Hydrophilic outside

water fearing

water loving

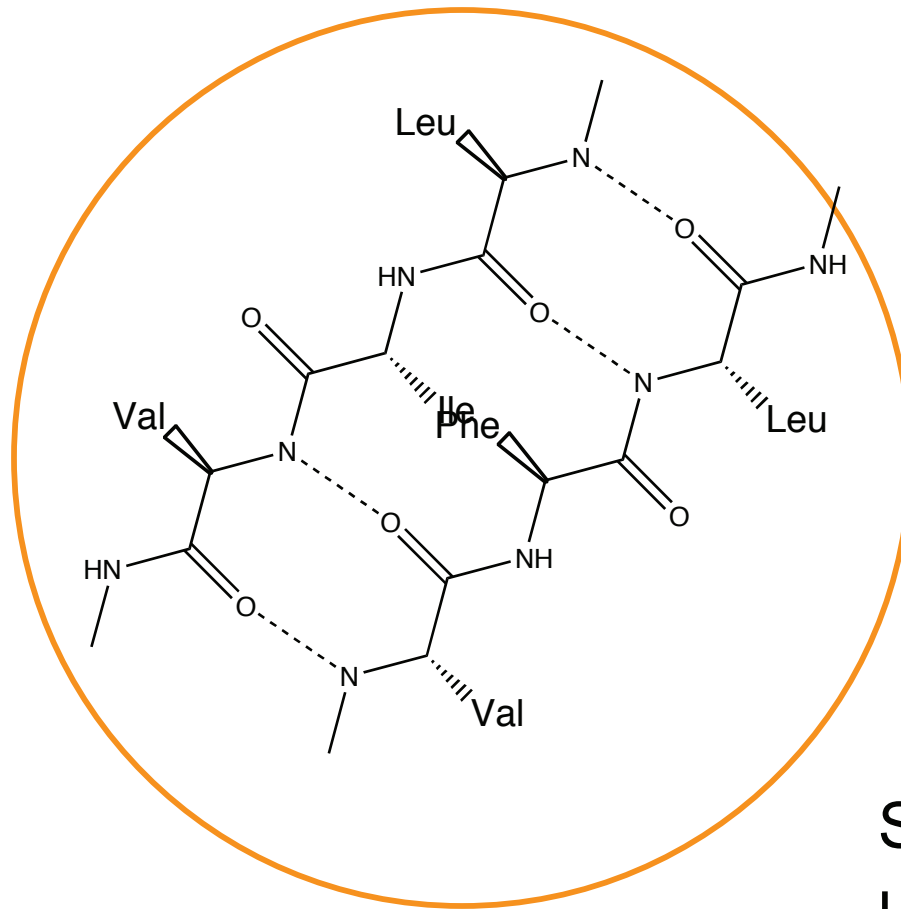


Beta pleated sheet (see p 568)

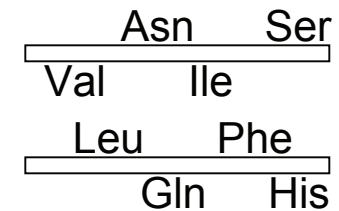
Hydrophobic inside / Hydrophilic outside

water fearing

water loving



Beta sandwich



Side chains point
up and down

Beta pleated sheet (see p 568)

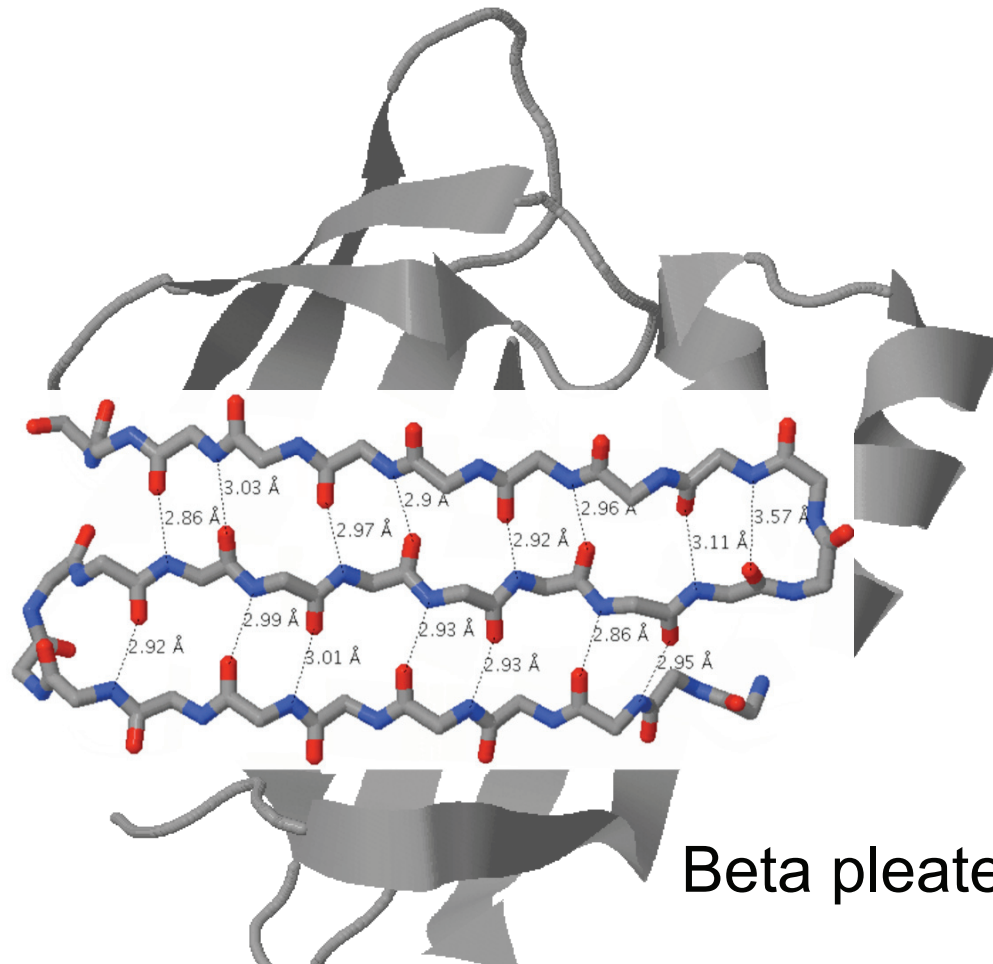
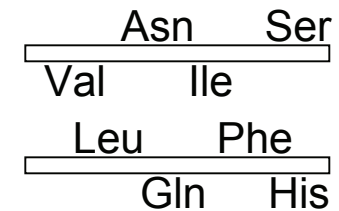
Hydrophobic inside / Hydrophilic outside

water fearing

water loving



Beta sandwich



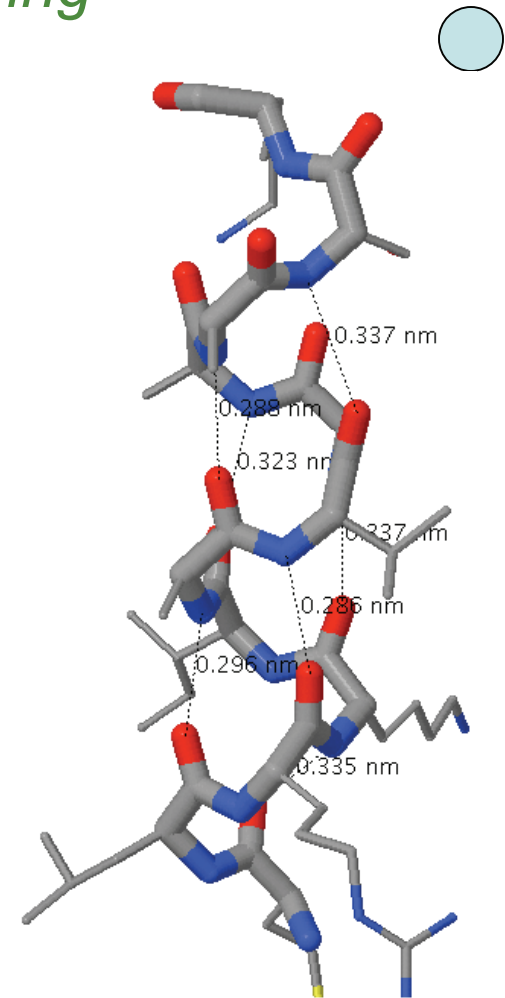
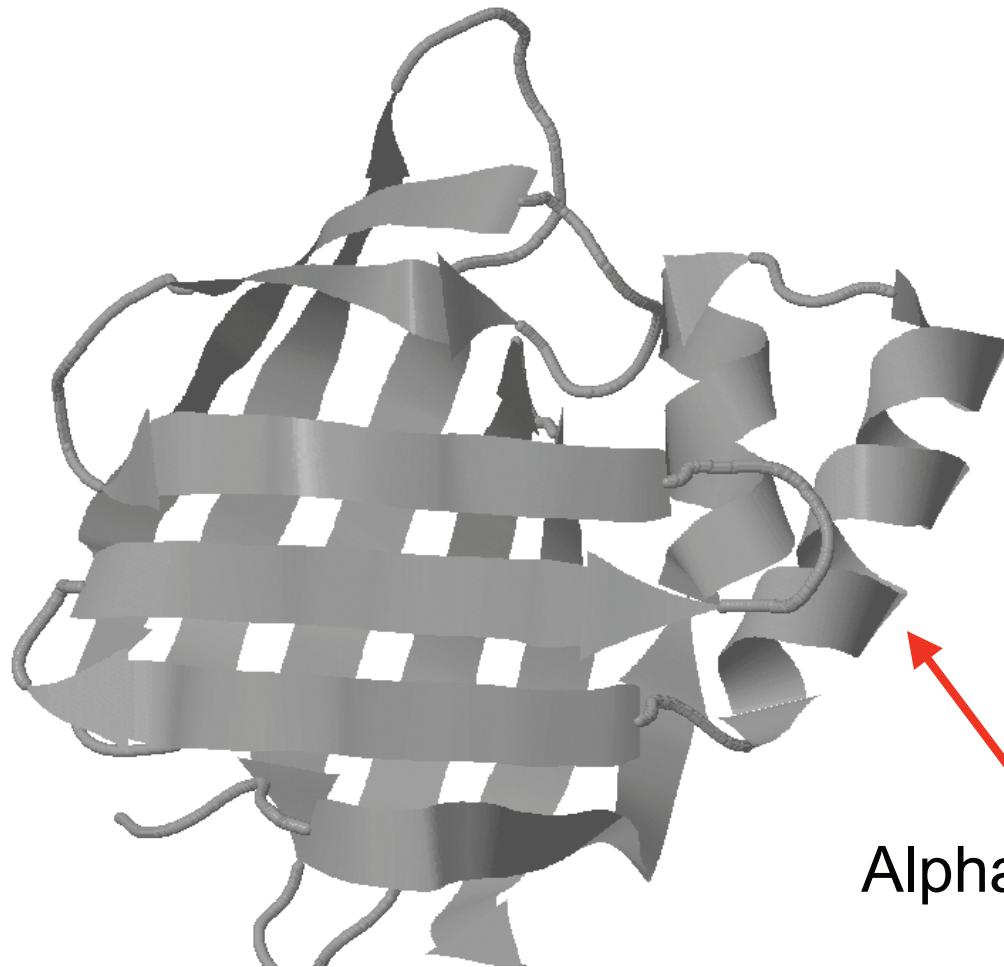
Side chains point
up and down

Beta pleated sheet (see p 568)

Hydrophobic inside / Hydrophilic outside

water fearing

water loving



Alpha helix (see p 568)